

Trolleys and Tools for
Outdoor Cleaning
and Landscaping

2018/2019



FLORA Wilh. Förster
GmbH & Co. KG

Schmidtsiepen 3
58553 Halver
Germany

Tel +49 (0)2353 9117-0
Fax +49 (0)2353 9117-17
Email info@flora.biz
Internet www.flora.biz



Company profile

Made in Germany



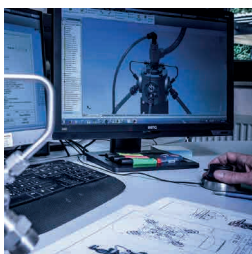
Since 1875, FLORA has specialised in the development and manufacture of high-quality and durable garden tools and equipment. Even in the early years, the values which FLORA still lives by were established: quality, technology and know-how. Our customers can rely on us – we are ready and waiting. Worldwide. From the heart.

Quality since 1875

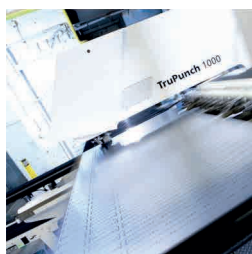


A skilled team, our ability to innovate, and the use of the most up-to-date technologies – these are our guarantee for top-quality products. We are responsible for the entire process chain, from development to manufacture and assembly right up to despatch.

Competence in the entire process chain



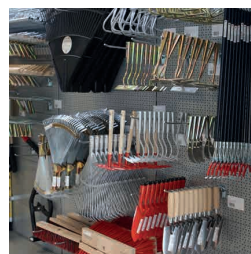
Design and development



Manufacturing



Assembly



Marketing and sales

Content

Outdoor cleaning equipment



Page 6
Trolleys for outdoor cleaning



Page 14
Customized trolleys



Page 15
Litter pickers and accessories



Page 20
Dustpans and brooms

Ground Maintenance equipment



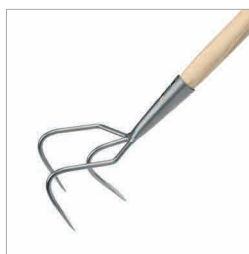
Page 22
Leaf rakes



Page 26
Rakes



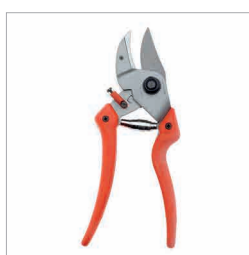
Page 30
Hoes, scuffles and scrapers



Page 35
Cultivators



Page 36
Small tools



Page 38
LÖWE Shears

Landscaping equipment



Page 40
Lawn care



Page 41
Laying tools



Page 42
IDEAL spades and shovels

Winter tools and equipment



Page 44
Firewood handling



Page 46
Snow shovels

Retail support



Page 48
Display stands



Page 49
Fairs

Trolleys for outdoor cleaning

Easy – the light ones



The Easy cleaning trolleys are more than just light and very manoeuvrable. They have a carrying capacity of up to two trash bins, so sorting takes place during collection. This makes Easy the perfect assistants for the cleaning of car parks, industrial and outdoor facilities and public buildings.

Accurato – the flexible ones



For everybody who is looking for a flexible, all-round product for daily use in street cleaning operations and in green spaces such as public parks, Accurato is what they need. Numerous functions are included, and up to four different handle tools can be carried.

Carrier – the special ones



The Carrier trolleys are ideal for special situations and requirements. They provide the optimal solution for landscaping work, for transporting large quantities of green waste and for other uses. Tool holders are provided to carry handle tools.



Easy Uno



Easy Duo



Easy Original



Accurato Compact



Accurato City



Accurato Metropol



Carrier Original



Carrier Pick Up



Carrier Volumno

Easy – the light ones



With Easy Uno and Easy Original, you can choose between puncture-proof tyres (see large photo) and classic pneumatic tyres (right).



All Easy cleaning trolleys have a sturdy holder for a Greifboy.



With the Performa Edition (right, Easy Duo, Performa Edition), suitable tools are included in the equipment.



Made in Germany



Easy – the light ones

| | Easy Uno | Easy Duo | Easy Original |
|--------------------------------|----------|----------|---------------|
| Height (cm) | 137 | 117 | 150 |
| Width (cm) | 50 | 71 | 50 |
| Length (cm) | 51 | 110 | 37 |
| Weight (kg) | 6 | 17 | 5 |
| Number of bins | 1 | 2 | 1 |
| Dustbin / Bin liner | ●/- | ●/- | -/● |
| Capacity (l) | 60 | 120 | 120 |
| Aluminium / Steel frame | ●/● | ●/● | ●/● |
| Wheel Diameter | 260 | 260 | 260 |
| Puncture-proof wheels | ○ | ● | ○ |
| Lockable storage compartment | - | - | - |
| Tool holder | - | ●/4 | - |
| Holding clip for litter picker | ● | ● | ● |
| Reflectors | - | 4 | - |
| Rolls for load support | - | ● | - |

Easy Original Compact, lightweight trolley for large bin liners for regular use in all terrains. Aluminium, powder-coated frame made of galvanised steel, holder for a Greifboy, holder for a bin liner 120 l, self-assembly, PU 1

| Number | Meas. L x W x H (cm) | Weight (kg) | Edition | Set of tyres | EAN 4007105 |
|-----------|-------------------------|-------------|-----------------------|----------------|-------------|
| 01450/1 | 37 x 50 x 150 | 5.0 | - | pneumatic | ...007800 |
| 01450/2 | 37 x 50 x 150 | 5.0 | - | puncture-proof | ...007817 |
| 01450/100 | 37 x 50 x 150 | 5.3 | Performa ¹ | puncture-proof | ...007923 |



Easy Uno Compact, lightweight entry-level trolley for regular use. Aluminium, powder-coated frame made of galvanised steel, holder for a Greifboy, a dustbin 60 l, self-assembly, PU 1

| Number | Meas. L x W x H (cm) | Weight (kg) | Edition | Set of tyres | EAN 4007105 |
|-----------|-------------------------|-------------|-----------------------|----------------|-------------|
| 01451/1 | 51 x 50 x 137 | 6.0 | - | pneumatic | ...007930 |
| 01451/2 | 51 x 50 x 137 | 6.1 | - | puncture-proof | ...007831 |
| 01451/100 | 51 x 50 x 137 | 6.3 | Performa ¹ | puncture-proof | ...007947 |



Easy Duo Compact, lightweight trolley with two dustbins for waste separation for regular use, rolls on the handle to facilitate the loading. Aluminium, powder-coated frame made of galvanised steel, puncture-proof wheels, holder for a Greifboy and four handle tools, two dustbins each 60 l, four reflectors, assembled, PU 1

| Number | Meas. L x W x H (cm) | Weight (kg) | Edition | Set of tyres | EAN 4007105 |
|-----------|-------------------------|-------------|-----------------------|----------------|-------------|
| 01452 | 110 x 71 x 117 | 17.0 | - | puncture-proof | ...007848 |
| 01452/100 | 110 x 71 x 117 | 20.3 | Performa ² | puncture-proof | ...007954 |



Key

¹ with Greifboy 01150/90

² with Greifboy 01150/90, aluminium scoop 02485/9, road broom 01512/42, with handles

Accurato – the flexible ones



With the Accurato Compact and the Accurato City, you can choose between a fixed rubbish bag holder (right) and a removable unit with a portable Beutelboy (see large photo).

All Accurato models have a large, lockable storage compartment.

Shock-protected reflectors on all sides support visibility in poor light.



Made in Germany



Rollers as loading aid

Sturdy frame construction

Lockable storage compartment

Four tool holders with quick clamping

Locking brake for the rear wheels

Puncture-proof tyres



Accurato – the flexible ones

| | Accurato Compact | Accurato City | Accurato Metropol |
|--------------------------------|------------------|---------------|-------------------|
| Height (cm) | 111 | 111 | 111 |
| Width (cm) | 71 | 71 | 71 |
| Length (cm) | 97 | 97 | 126 |
| Weight (kg) | 18 | 22 | 24 |
| Number of bins | 1 | 1 | 2 |
| Capacity (l) | 120 | 120 | 240 |
| Aluminium / Steel frame | ●/● | ●/● | ●/● |
| Wheel Diameter | 260 | 260 | 260 |
| Number of Wheels | 2 | 4 | 4 |
| Puncture-proof wheels | ● | ● | ● |
| Brake | - | ● | ● |
| Lockable storage compartment | ● | ● | ● |
| Tool holder | ●/4 | ●/4 | ●/4 |
| Holding clip for litter picker | ● | ● | ● |
| Reflectors | 6 | 6 | 6 |
| Rolls for load support | ● | ● | ● |

Accurato Compact Universal trolley for all-terrain outdoor maintenance work, attractive design for use in public and superior areas, rolls on the handle to facilitate the loading. Aluminium, powder-coated frame made of galvanised steel, puncture-proof wheels, holder for a Greifboy and four handle tools, lockable storage compartment, six reflectors, assembled, PU 1

| Number | Meas. L x W x H (cm) | Weight (kg) | Edition | Holder for bin liner | EAN 4007105 |
|-----------|-------------------------|-------------|-----------------------|-------------------------|-------------|
| 01453/1 | 97 x 71 x 111 | 18.0 | - | fixed | ...007855 |
| 01453/2 | 97 x 71 x 111 | 18.0 | - | removable | ...007961 |
| 01453/100 | 97 x 71 x 111 | 21.3 | Performa ¹ | fixed | ...007978 |

Accurato City Universal trolley for professional urban and municipal use, attractive design for use in public and superior areas, rolls on the handle to facilitate the loading. Aluminium, powder-coated frame made of galvanised steel, puncture-proof wheels, holder for a Greifboy and four handle tools, lockable storage compartment, six reflectors, brake, assembled, PU 1

| Number | Meas. L x W x H (cm) | Weight (kg) | Edition | Holder for bin liner | EAN 4007105 |
|-----------|-------------------------|-------------|-----------------------|-------------------------|-------------|
| 01455/1 | 97 x 71 x 111 | 22.0 | - | fixed | ...007770 |
| 01455/2 | 97 x 71 x 111 | 22.0 | - | removable | ...007992 |
| 01455/100 | 97 x 71 x 111 | 25.3 | Performa ¹ | removable | ...007985 |

Accurato Metropol Large trolley for professional urban and municipal use, rolls on the handle to facilitate the loading. Aluminium, powder-coated frame made of galvanised steel, puncture-proof wheels, holder for a Greifboy and four handle tools, two holders for bin liners, lockable storage compartment, six reflectors, brake, assembled, PU 1

| Number | Meas. L x W x H (cm) | Weight (kg) | Edition | Holder for bin liner | EAN 4007105 |
|-----------|-------------------------|-------------|-----------------------|-------------------------|-------------|
| 01456 | 126 x 71 x 111 | 24.0 | - | fixed | ...007862 |
| 01456/100 | 126 x 71 x 111 | 27.3 | Performa ¹ | fixed | ...008005 |

Key

¹ with Greifboy 01150/90, aluminium scoop 02485/9, road broom 01512/42, with handles



Carrier – the special ones



The Carrier Original (right) carries a 120 l rubbish container and has all the advantages of the Accurato series. These include the practical rollers as a loading aid, plus holders for four handle tools and a Greifboy.



The Carrier Vولو increases the volume of a wheelbarrow by almost three times. A handle tool holder is available as an option.



The Carrier Pick Up is a lightweight frame which can carry a 240 l refuse bin ergonomically. It holds two handle tools and a Greifboy.

Carrier – the special ones

| | Carrier Original | Carrier Pick Up | Carrier Volumno |
|--------------------------------|------------------|-----------------|-----------------|
| Height (cm) | 102 | 30 | 45 |
| Width (cm) | 70 | 80 | 61-70 |
| Length (cm) | 113 | 126 | 80 |
| Weight (kg) | 18 | 7 | 12 |
| Number of bins | 1 | 1 | - |
| Capacity (l) | 120 | 240 | 170 |
| Aluminium / Galvanised steel | ●/● | -/● | -/● |
| Wheel Diametre | 260 | - | - |
| Puncture-proof wheels | ● | - | - |
| Brake | - | - | - |
| Lockable storage compartment | ● | - | - |
| Tool holder / Number | ●/4 | ●/2 | ○/1 |
| Holding clip for litter picker | ● | ● | - |
| Reflectors | 6 | - | - |
| Rolls for load support | ● | - | - |

Carrier Original Cleaning trolley for refuse bins of 120 l, attractive design for use in public and superior areas. Aluminium, powder-coated frame made of galvanised steel, puncture-proof wheels, holder for a Greifboy and four handle tools, lockable storage compartment, six reflectors, assembled, PU 1

| Number | Meas. L x W x H (cm) | Weight (kg) | Edition | EAN 4007105 |
|-----------|-------------------------|-------------|-----------------------|-------------|
| 01457/1 | 113 x 70 x 102 | 18.0 | - | ...007879 |
| 01457/100 | 113 x 70 x 102 | 21.3 | Performa ¹ | ...008029 |



Carrier Pick Up Stable frame with handle and tool holder for quick attachment to 240 l refuse bins. Galvanised sheet steel, holder for a Greifboy and two handle tools, despatch without refuse bin and without tools, unassembled, PU 1

| Number | Meas. L x W x H (cm) | Weight (kg) | EAN 4007105 |
|--------|-------------------------|-------------|-------------|
| 01404 | 126 x 80 x 30 | 7.0 | ...002836 |



Carrier Volumno Easy-to-fit wheelbarrow attachment to enlarge the loading capacity by three times, optional with tool holder, adjustable for 61-70 cm wheelbarrow. Galvanised sheet steel, quick-release to fit at the edge of the wheelbarrow, without wheelbarrow, unassembled, PU 1

| Number | Meas. L x W x H (cm) | Weight (kg) | Equipment | EAN 4007105 |
|-----------|-------------------------|-------------|-------------|-------------|
| 01406 | 80 x 45 | 12.0 | - | ...002850 |
| 01406/110 | 80 x 45 | 13.0 | Tool holder | ...012989 |

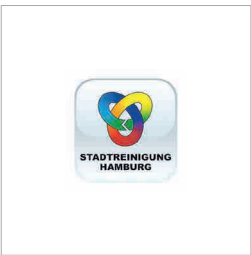


Key

¹ with Greifboy 01150/90, aluminium scoop 02485/9, road broom 01512/42, with handles

Customized trolleys

Projects



Customized cleaning Trolley for the City of Hamburg



Customized foldable trolley for a large commercial cleaning company



Customized cleaning trolley for Deutsche Bahn



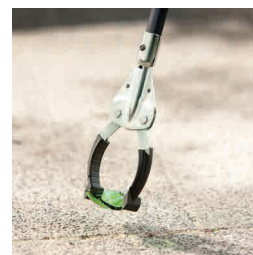
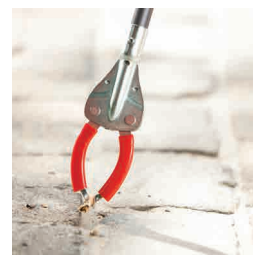
Pictures, names and logos by courtesy of Deutsche Bahn and Stadtreinigung Hamburg

Litter pickers and accessories



Greifboys, advanced series

For 30 years, Greifboys have been among the most successful litter pickers internationally – “Made in Germany”, of course.



Made in Germany



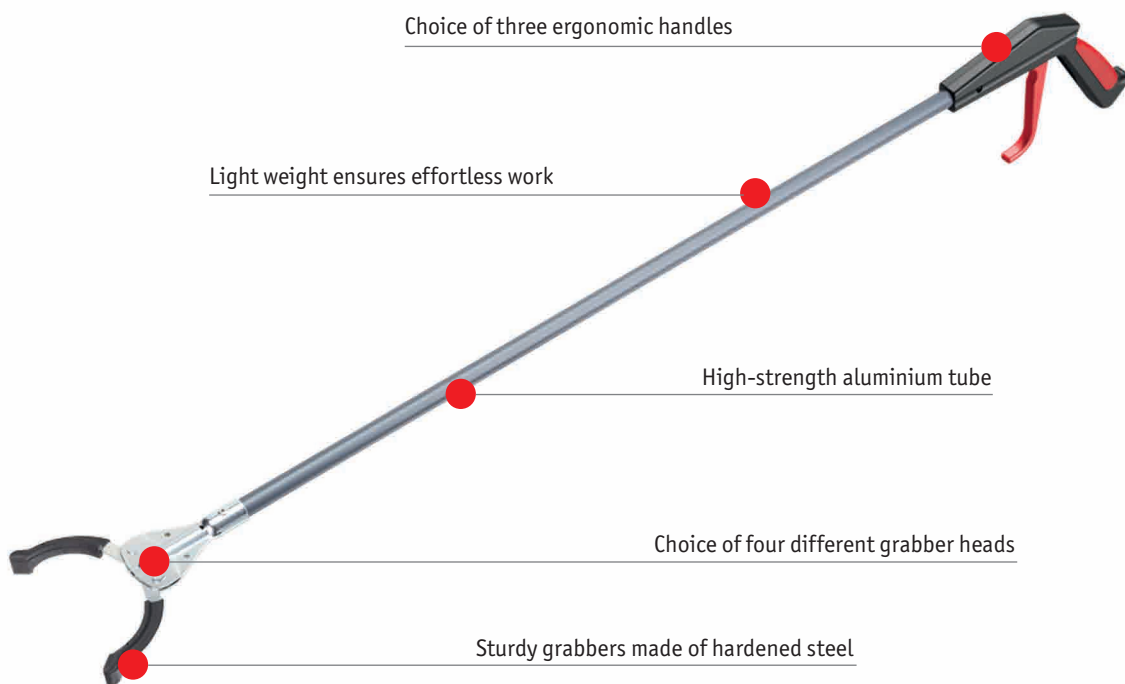
Choice of three ergonomic handles

Light weight ensures effortless work

High-strength aluminium tube

Choice of four different grabber heads

Sturdy grabbers made of hardened steel



Litter pickers and accessories

Advance series



With a large number of different types, Greifboys are ideal for use in all sectors of rubbish collection. Based on a maintenance-free, internal mechanical system, they provide maximum durability, functionality and ergonomics. Landscaping specialists, municipalities and cleaning businesses prefer these Greifboys for garbage disposal work, because they pick up a discarded bus ticket just as easily as a large champagne bottle.

Combinations



Four different litter picker heads can be combined with three different handles and various shaft lengths. The right product is available for every task, for example Greifboy 40 for precision picking outdoors. All Greifboys are available with the following handles:

- Steel handle for gripping and direct power transfer,
- An especially easy-to-use plastic handle or
- A budget price lever handle.



Retail displaying



Whether a freestanding single or in a sales wall integrated solution we find the ideal way for the perfect product presentation on any shop floor.

Greifboys, advanced series

Greifboy 40 Grabber for picking up refuse and rubbish outdoors, with opened tips for scraping off stuck-on residues.

Greifboy 40 with steel handle Anodised aluminium tube with integrated mechanism, galvanised head, hardened plastic-coated grabbers, PU 10

| Number | Length (cm) | Weight (g) | Grabber opening (cm) | Handle | EAN 4007105 |
|-----------|-------------|------------|----------------------|--------|-------------|
| 01040/75 | 75 | 280 | 10.5 | steel | ...006568 |
| 01040/90 | 90 | 300 | 10.5 | steel | ...300413 |
| 01040/105 | 105 | 320 | 10.5 | steel | ...300420 |
| 01040/140 | 140 | 370 | 10.5 | steel | ...300437 |

Greifboy 40 with plastic handle Anodised aluminium tube with integrated mechanism, galvanised head, hardened plastic-coated grabbers, PU 10

| Number | Length (cm) | Weight (g) | Grabber opening (cm) | Handle | EAN 4007105 |
|-----------|-------------|------------|----------------------|---------|-------------|
| 01140/90 | 90 | 310 | 10.5 | plastic | ...330410 |
| 01140/105 | 105 | 330 | 10.5 | plastic | ...330427 |

Greifboy 40 with lever handle Anodised aluminium tube with integrated mechanism, galvanised head, hardened plastic-coated grabbers, PU 10

| Number | Length (cm) | Weight (g) | Grabber opening (cm) | Handle | EAN 4007105 |
|--------|-------------|------------|----------------------|--------|-------------|
| 01240 | 90 | 300 | 10.5 | lever | ...004120 |

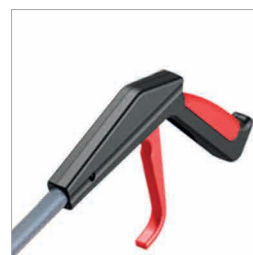
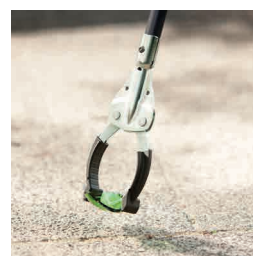
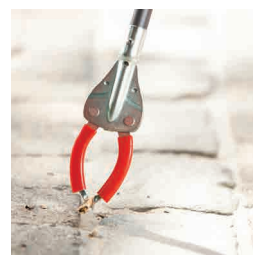
Greifboy 50 Grabber for picking up refuse and rubbish both indoors and outdoors, Fitted with anti-slip plastic-coated grabbers for fast work, including on smooth surfaces.

Greifboy 50 steel handle Anodised aluminium tube with integrated mechanism, galvanised head, hardened plastic-coated grabbers, PU 10

| Number | Length (cm) | Weight (g) | Grabber opening (cm) | Handle | EAN 4007105 |
|-----------|-------------|------------|----------------------|--------|-------------|
| 01050/75 | 75 | 280 | 10.5 | steel | ...300505 |
| 01050/90 | 90 | 300 | 10.5 | steel | ...300512 |
| 01050/105 | 105 | 320 | 10.5 | steel | ...300529 |
| 01050/140 | 140 | 370 | 10.5 | steel | ...300536 |

Greifboy 50 with plastic handle Anodised aluminium tube with integrated mechanism, galvanised head, hardened plastic-coated grabbers, PU 10

| Number | Length (cm) | Weight (g) | Grabber opening (cm) | Handle | EAN 4007105 |
|-----------|-------------|------------|----------------------|---------|-------------|
| 01150/90 | 90 | 310 | 10.5 | plastic | ...330519 |
| 01150/105 | 105 | 330 | 10.5 | plastic | ...330526 |



Greifboys, advanced series

Greifboy 50 with lever handle Anodised aluminium tube with integrated mechanism, galvanised head, hardened plastic-coated grabbers, PU 10

| Number | Length (cm) | Weight (g) | Grabber opening (cm) | Handle | EAN 4007105 |
|--------|-------------|------------|----------------------|--------|-------------|
| 01250 | 90 | 310 | 10.5 | lever | ...300543 |



Greifboy 70 Grabber for picking up refuse and rubbish outdoors, coated in wear-resistant plastic tips.



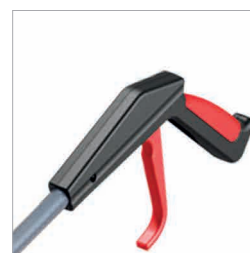
Greifboy 70 with steel handle Anodised aluminium tube with integrated mechanism, galvanised head, hardened plastic-coated grabbers, PU 10

| Number | Length (cm) | Weight (g) | Grabber opening (cm) | Handle | EAN 4007105 |
|-----------|-------------|------------|----------------------|--------|-------------|
| 01070/75 | 75 | 280 | 10.5 | steel | ...006575 |
| 01070/90 | 90 | 300 | 10.5 | steel | ...000719 |
| 01070/105 | 105 | 320 | 10.5 | steel | ...000726 |
| 01070/140 | 140 | 370 | 10.5 | steel | ...000733 |



Greifboy 70 with plastic handle Anodised aluminium tube with integrated mechanism, galvanised head, hardened plastic-coated grabbers, PU 10

| Number | Length (cm) | Weight (g) | Grabber opening (cm) | Handle | EAN 4007105 |
|-----------|-------------|------------|----------------------|---------|-------------|
| 01170/90 | 90 | 310 | 10.5 | plastic | ...000740 |
| 01170/105 | 105 | 330 | 10.5 | plastic | ...000764 |

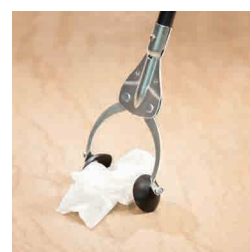


Greifboy 70 with lever handle Anodised aluminium tube with integrated mechanism, galvanised head, hardened plastic-coated grabbers, PU 10

| Number | Length (cm) | Weight (g) | Grabber opening (cm) | Handle | EAN 4007105 |
|--------|-------------|------------|----------------------|--------|-------------|
| 01270 | 90 | 310 | 10.5 | lever | ...000771 |



Greifboy 90 Grabber for picking up refuse and rubbish indoors, special grabber with cups for picking up tiny, smooth and wet parts.



Greifboy 90 Anodised aluminium tube with integrated mechanism, galvanised head, special grabber with cups, PU 10

| Number | Length (cm) | Weight (g) | Grabber opening (cm) | Handle | EAN 4007105 |
|-----------|-------------|------------|----------------------|---------|-------------|
| 01090/90 | 90 | 310 | 10.5 | steel | ...000917 |
| 01090/105 | 105 | 330 | 10.5 | steel | ...000924 |
| 01090/140 | 140 | 380 | 10.5 | steel | ...000931 |
| 01190/90 | 90 | 320 | 10.5 | plastic | ...000948 |
| 01190/105 | 105 | 340 | 10.5 | plastic | ...000962 |



Greifboys, basic series and accessories

Greifboy aluminium Robust, light grabber for picking up rubbish, and also for scraping off stuck-on residues. Aluminium tube, external mechanism, galvanised head, PU 10

| Number | Length (cm) | Weight (g) | Grabber opening (cm) | Handle | EAN 4007105 |
|--------|-------------|------------|----------------------|--------|-------------|
| 01320 | 90 | 220 | 4 | lever | ...300208 |



Greifboy wood Grabber for picking up rubbish, comfortable wooden handle, metal grabber also suitable for scraping off stuck-on residues. Wood tube, external mechanism, galvanised head, PU 10

| Number | Length (cm) | Weight (g) | Grabber opening (cm) | Handle | EAN 4007105 |
|--------|-------------|------------|----------------------|--------|-------------|
| 01321 | 87 | 240 | 3.5 | loop | ...300215 |



Paper gripper Simple, extremely robust tool for picking up loose, light rubbish, 6 cm opening, PU 10

| Number | Length (cm) | Weight (g) | EAN 4007105 |
|--------|-------------|------------|-------------|
| 01315 | 85 | 440 | ...100150 |



Litter spear For piercing and picking up paper and plastic on soft surfaces. Anodised aluminium handle, steel spike, PU 10

| Number | Length (cm) | Weight (g) | EAN 4007105 |
|--------|-------------|------------|-------------|
| 01380 | 98 | 140 | ...300802 |



Display stands, Greifboys Attractive display stands of galvanised steel for 3 x 10 kinds of Greifboys, PU 1

| Number | Audience | Allocation | Allocation | Allocation | EAN 4007105 |
|----------|------------|------------|------------|------------|-------------|
| 08326/10 | Individual | - | - | - | ...002799 |
| 08326/11 | Budget | 01320 | 01270 | 01150/90 | ...004717 |
| 08326/12 | Competence | 01040/90 | 01050/90 | 01150/90 | ...004922 |



Greifboy Designed especially for the targeted emptying of rubbish bins or the hygienic removal of waste and foreign objects from sinks, urinals etc. hardened plastic coated grabbers, PU 10

| Number | Length(cm) | Weight (g) | Grabber opening (cm) | Handle | EAN 4007105 |
|----------|------------|------------|----------------------|---------|-------------|
| 01150/45 | 45 | 220 | 10.5 | plastic | ...330168 |



Bag Holder In order to hold refuse bags open to make filling easy, the handle may be held upwards or downwards. With tension bow, PU 10

| Number | Diameter (cm) | Weight (g) | EAN 4007105 |
|--------|---------------|------------|-------------|
| 01501 | 40 | 640 | ...011012 |



Dustpans and brooms



The Dusty Special is sturdy and lightweight. A 50 cm wide outdoor broom is available as an option.



The Dusty Special is a mobile dustpan in two sizes for easy indoor and outdoor sweeping.



Made in Germany



Holder for a broom

Narrow rice straw broom for accurate work

Long bristles for fast action

Light aluminium housing and handle

Dustpans and brooms

Dusty Mobile Mobile dustpan with tilt function and lobby broom (W 25 cm) for indoor and outdoor use. Aluminium, plastic wheels, PU 1

| Number | Pan W x D x H (cm) | Height (cm) | Weight (kg) | Broom | EAN 4007105 |
|--------|-----------------------|-------------|-------------|----------|-------------|
| 01507 | 27 x 20 | 122 | 3.3 | included | ...007893 |



Dusty Special Light, mobile Dustpan, optional with lobby broom (W 25 cm), for effortless indoor and outdoor cleaning-up. Aluminium, plastic wheels, PU 1

| Number | Pan W x D x H (cm) | Height (cm) | Weight (kg) | Broom | EAN 4007105 |
|-----------|-----------------------|-------------|-------------|----------|-------------|
| 01514/30 | 26 x 29 x 14.5 | 90 | 1.9 | without | ...004779 |
| 01514/301 | 26 x 29 x 14.5 | 90 | 2.3 | included | ...004786 |



Dusty Special Light, mobile Dustpan, optional with broom (W 50 cm), for effortless indoor and outdoor cleaning-up. Aluminium, plastic wheels, PU 1

| Number | Pan W x D x H (cm) | Height (cm) | Weight (kg) | Broom | EAN 4007105 |
|-----------|-----------------------|-------------|-------------|----------|-------------|
| 01514/50 | 41 x 38.5 x 19 | 90 | 2.7 | without | ...004793 |
| 01514/501 | 41 x 38.5 x 19 | 90 | 3.7 | included | ...004809 |



Dusty Original Sturdy, light dustpan for outdoor use, optional with lobby broom (B 25 cm). Aluminium, plastic handle, PU 2

| Number | Pan W x D x H (cm) | Height (cm) | Weight (kg) | Broom | EAN 4007105 |
|-----------|-----------------------|-------------|-------------|----------|-------------|
| 01502/75 | 27 x 21 x 9 | 75 | 0.8 | without | ...100693 |
| 01502/751 | 27 x 21 x 9 | 75 | 1.1 | included | ...005868 |
| 01502/90 | 27 x 21 x 9 | 90 | 0.9 | without | ...002676 |
| 01502/901 | 27 x 21 x 9 | 90 | 1.2 | included | ...005875 |



Dusty Compact Tough sweeper shovel for outdoor use, optional with lobby broom (W 25 cm). Galvanised steel, aluminium pole, plastic handle, PU 2

| Number | Pan W x D x H (cm) | Height (cm) | Weight (kg) | Broom | EAN 4007105 |
|-----------|-----------------------|-------------|-------------|----------|-------------|
| 01506/30 | 30 x 25 x 12 | 100 | 0.9 | without | ...002553 |
| 01506/301 | 30 x 25 x 12 | 100 | 1.2 | included | ...006773 |
| 01506/40 | 40 x 34 x 14 | 100 | 1.4 | without | ...002560 |
| 01506/401 | 40 x 34 x 14 | 100 | 1.7 | included | ...006780 |



Road broom High-quality broom for municipal cleaning. Solid wooden saddle, handle hole, extra-close and long bristles, PU 6

| Number | Edging W x H (cm) | Colour | Edging | Hardness | EAN 4007105 |
|----------|----------------------|---------|---------------------|----------|-------------|
| 01511/40 | 40 x 13 | red | Elaston bristles | medium | ...003758 |
| 01512/42 | 42 x 13 | red | super Elaston | hard | ...003765 |
| 01513/42 | 42 x 13 | natural | Palm Piassava | hard | ...003772 |



Outdoor broom Tough broom for accurate outdoor cleaning. Wooden saddle, handle hole, PU 6

| Number | Edging W x H (cm) | Colour | Edging | Hardness | EAN 4007105 |
|----------|----------------------|-------------|--------------------|----------|-------------|
| 01508/50 | 50 x 10 | natural/red | Arenga/ Elaston | medium | ...002638 |
| 01509/50 | 50 x 10 | red | Elaston | hard | ...002652 |



Metal leaf rakes




The wide leaf rake has a spring-loaded tine rail – especially suitable for sensitive surfaces.



A straightforward galvanised steel stand underlines FLORA's professionalism.



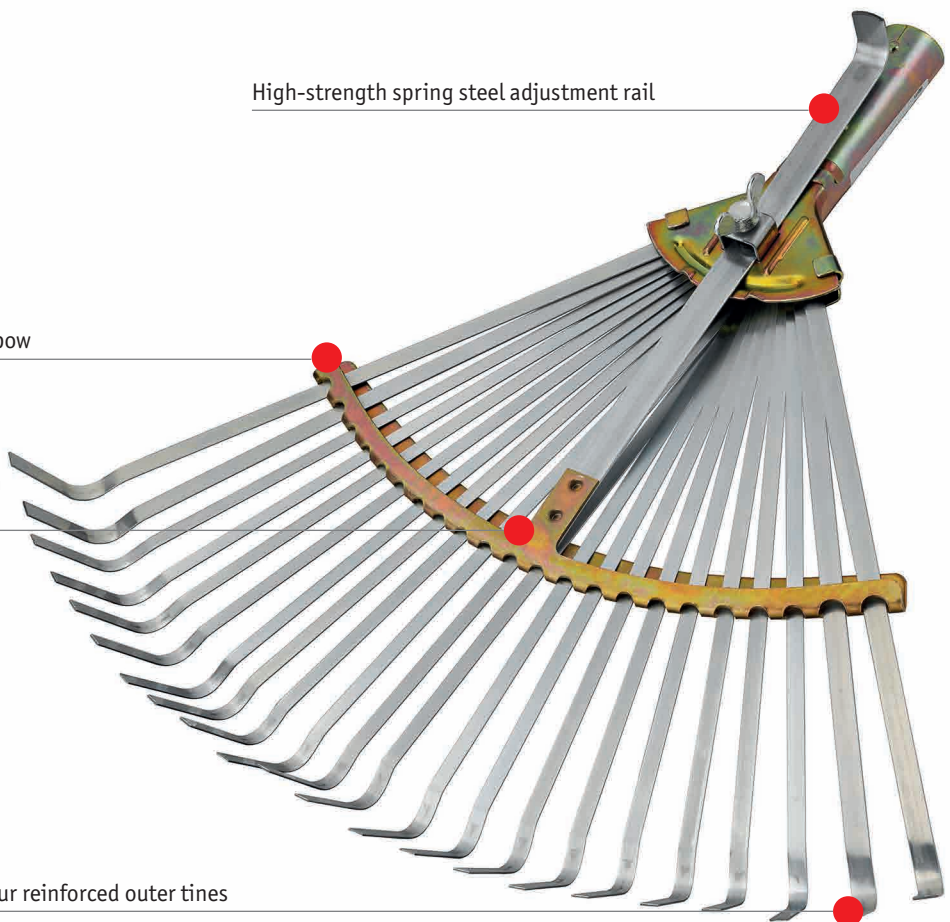
Made in Germany 

High-strength spring steel adjustment rail

Broad, sturdy bow

Precise connection to the adjustment rail directly on the bow

Four reinforced outer tines



Metal leaf rakes

Professional leaf rake with closed socket (adjustable) Robust, durable leaf rake for daily and professional use, adjustable working width. Closed socket, 22 flat tines, four reinforced outer tines, galvanised, high-strength spring steel adjustment rail, reinforced bow, PU 10

| Number | Width (cm) | Tines | EAN 4007105 |
|--------|------------|-------|-------------|
| 02779 | 32 – 48 | 22 | ...377903 |



Professional leaf rake with U-bolt socket (adjustable) Robust, durable leaf rake for daily and professional use, adjustable working width. Closed U-bolt socket, 22 flat tines, four reinforced outer tines, galvanised, high-strength spring steel adjustment rail, reinforced bow, PU 10

| Number | Width (cm) | Tines | EAN 4007105 |
|--------|------------|-------|-------------|
| 02789 | 32 – 48 | 22 | ...387902 |



Professional leaf rake (fixed) Robust, durable leaf rake for daily and professional use. 22 flat tines, four reinforced outer tines, galvanised, reinforced bow, PU 10

| Number | Width (cm) | Tines | EAN 4007105 |
|--------|------------|-------|-------------|
| 02777 | 45 | 22 | ...177701 |



Wire rake Robust, durable leaf rake with hard tines for efficient sweeping and light scarifying work. 22 round tines, reinforced bow, powder-coated, PU 10

| Number | Width (cm) | Tines | EAN 4007105 |
|--------|------------|-------|-------------|
| 02785 | 45 | 22 | ...178500 |



Leaf rake For routine applications, including home use. 22 flat tines, powder-coated, PU 10

| Number | Width (cm) | Tines | EAN 4007105 |
|--------|------------|-------|-------------|
| 02776 | 45 | 22 | ...007763 |



Wide leaf rake Light, thorough leaf rake for sensitive surfaces, even minimal unevenness. Aluminium carrier, stainless steel rake contour, 590 g, PU 10

| Number | Width (cm) | Tines | EAN 4007105 |
|--------|------------|-------|-------------|
| 02703 | 56 | 28 | ...189506 |

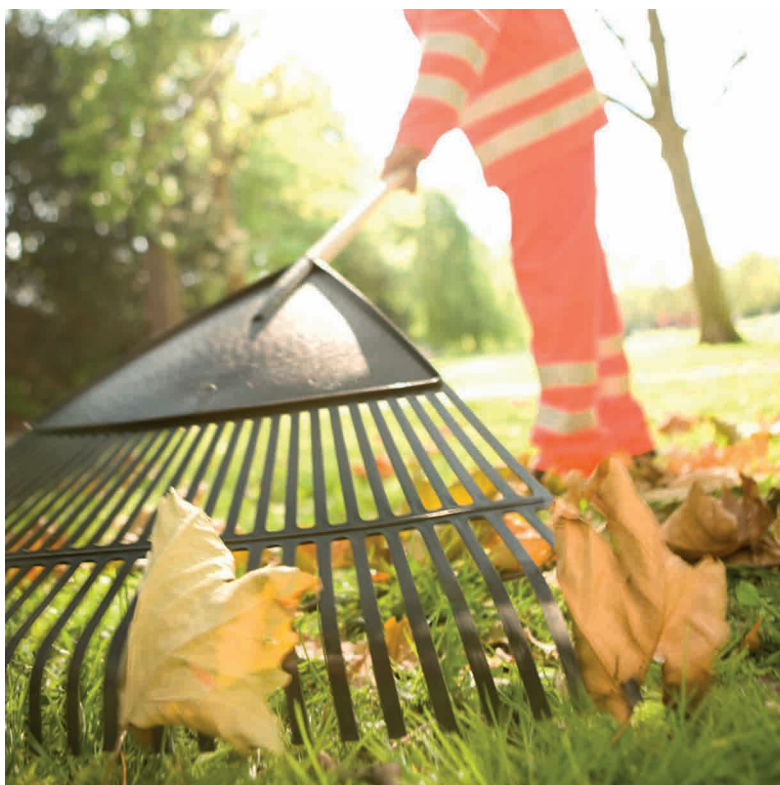


Small leaf rake Narrow leaf rake for flower beds, garden beds and hedges. Galvanised steel, PU 10

| Number | Width (cm) | Tines | EAN 4007105 |
|--------|------------|-------|-------------|
| 02701 | 29 | 11 | ...020014 |



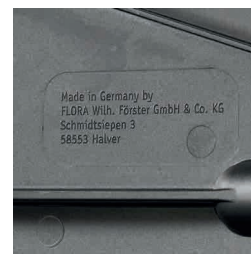
Plastic leaf rakes



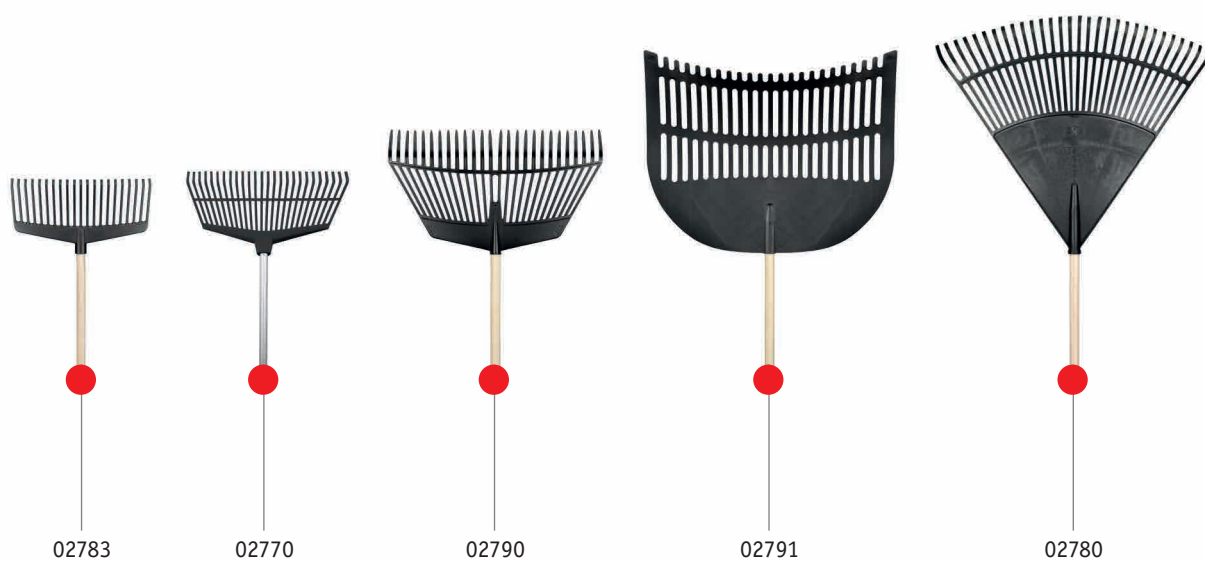
The display stand for landscape brooms provides special support for end-of-season sales.



The landscape broom with its special double sturdy curvature is manufactured in Germany.



Overview of the size



Plastic leaf rakes, handles and display stands for leaf rakes

Landscaping rake Extra large, light leaf rake for dealing with large areas efficiently. Ideal for raking leaves and hedge cuttings. Tough plastic, PU 10

| Number | Width (cm) | Tines | EAN 4007105 |
|--------|------------|-------|-------------|
| 02780 | 75 | 30 | ...107807 |



Combination tool leaf rake and fork High-quality and stable combination-tool for raking and scooping of leaves and grass cuttings. Polyamide, socket ø 28 mm, PU 10

| Number | Width (cm) | Tines | EAN 4007105 |
|--------|------------|-------|-------------|
| 02790 | 60 | 26 | ...027907 |



Garden rake, polyethylene Light, easy-to-handle universal rake, ideal for virgin lawns or gravel surfaces. Polyethylene, threaded socket ø 24 mm, PU 10

| Number | Width (cm) | Tines | Handle | EAN 4007105 |
|--------|------------|-------|-----------|-------------|
| 02770 | 44 | 26 | without | ...117707 |
| 02771 | 44 | 26 | Aluminium | ...117714 |



Garden rake, polyamide Light-weight, sturdy all-purpose broom for leaves and grass cuttings. Polyamide, socket ø 28 mm, PU 10

| Number | Width (cm) | Tines | EAN 4007105 |
|--------|------------|-------|-------------|
| 02783 | 38 | 20 | ...004410 |



Leaf scoop Large, flexible leaf scoop for collecting leaves and grass from lawn areas. Polypropylene, PU 5

| Number | Meas. W x D (cm) | EAN 4007105 |
|--------|---------------------|-------------|
| 02791 | 70 x 60 | ...004434 |



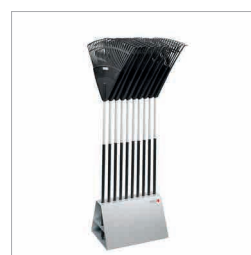
Tool handle Handles for leaf rakes and leaf scoop. Numerous versions, ø 28 mm, PU 10

| Number | Length (cm) | Material | Form | EAN 4007105 |
|-----------|-------------|-------------|----------|-------------|
| 02933 | 140 | Aspen | straight | ...005486 |
| 02900/140 | 140 | Ash | shaped | ...115482 |
| 02900/160 | 160 | Ash | shaped | ...115680 |
| 02910/150 | 150 | Fibre glass | straight | ...003734 |



Display stands Stable and attractive display stands for landscaping rakes and leaf scoops. Galvanised steel, for 10 tools, with handles, PU 1

| Number | Equipment | Handle | Wood handle | EAN 4007105 |
|----------|-----------|-----------|-------------|-------------|
| 08325/01 | 02779 | 02900/140 | Ash | ...005882 |
| 08325/06 | 02780 | 02900/140 | Ash | ...005936 |
| 08325/14 | 02780 | 02933 | Aspen | ...004755 |
| 08325/11 | 02791 | 02933 | Aspen | ...004748 |



Rakes



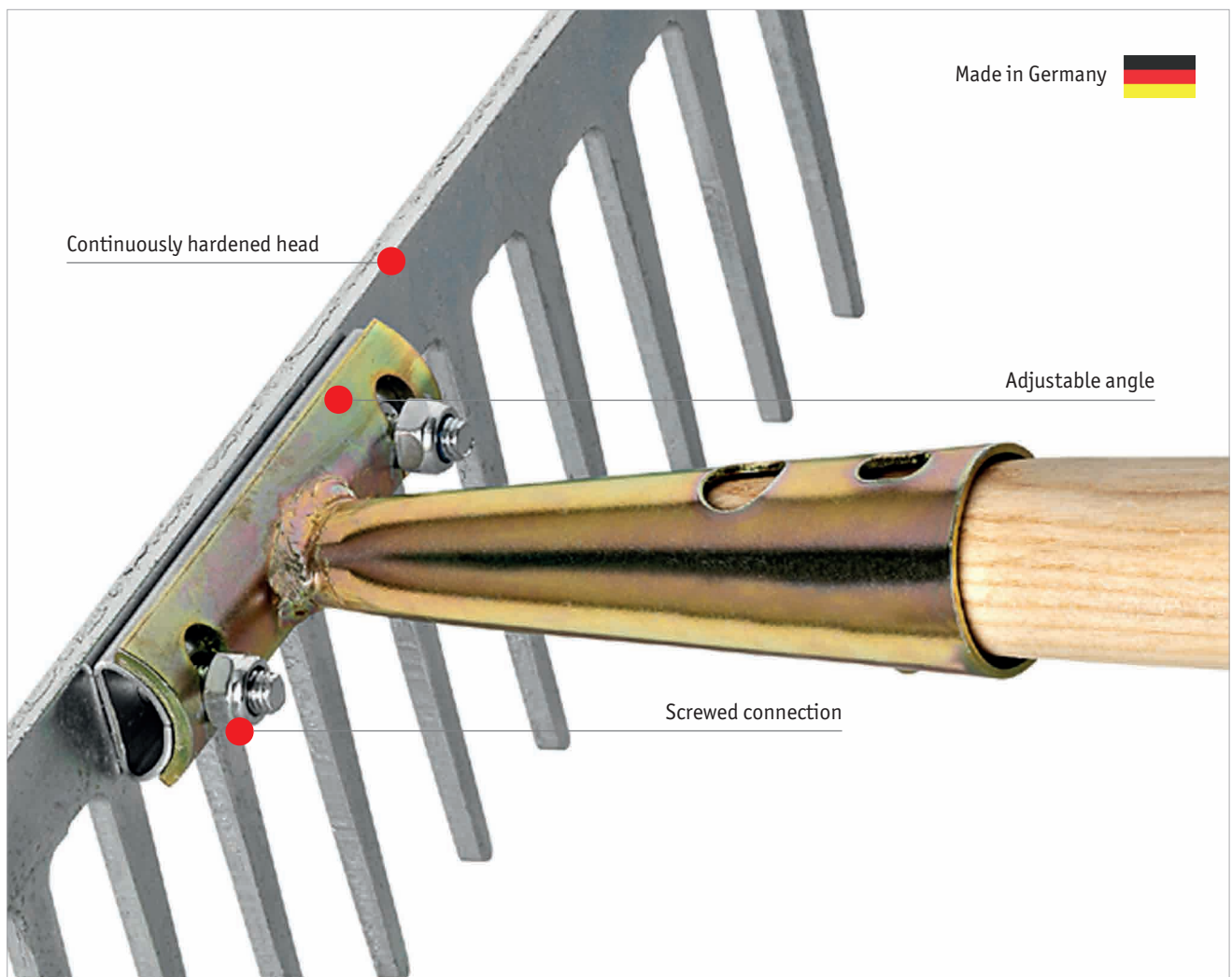
All aluminium rakes have an adjustable head angle.



Strong struts stabilise the wide aluminium rake and the pull-off profile.



The wooden rake in its original shape is especially lightweight.



Made in Germany



Continuously hardened head

Adjustable angle

Screwed connection

Steel rakes

Professional smoothing rake (hardened, adjustable) Robust all-purpose rake with patented adjustability of the head angle for professional use. Insert socket, hardened, galvanised steel, head thickness 4 mm, PU 10

| Number | Tines | Width (cm) | EAN 4007105 |
|----------|-------|------------|-------------|
| 02201/14 | 14 | 36 | ...022018 |
| 02201/16 | 16 | 42 | ...022032 |



Professional light metal rake (hardened, adjustable) Robust straight rake with patented adjustability of the head angle for professional use. Insert socket, hardened, galvanised steel, head thickness 4 mm, PU 10

| Number | Tines | Width (cm) | EAN 4007105 |
|----------|-------|------------|-------------|
| 02202/14 | 14 | 36 | ...022025 |
| 02202/16 | 16 | 42 | ...022049 |



Garden rake Robust, all-purpose rake for professional use. Insert socket, powder-coated PU 10

| Number | Tines | Width (cm) | EAN 4007105 |
|----------|-------|------------|-------------|
| 02289/8 | 8 | 20 | ...128918 |
| 02289/10 | 10 | 26 | ...128925 |
| 02289/12 | 12 | 31 | ...128932 |
| 02289/14 | 14 | 36 | ...128949 |
| 02289/16 | 16 | 42 | ...128956 |



Bow rake Robust bow rake for everyday use, bow protects tender plants during use in dense growth areas. Insert socket, powder-coated, PU 10

| Number | Tines | Width (cm) | EAN 4007105 |
|----------|-------|------------|-------------|
| 02291/14 | 14 | 36 | ...129113 |
| 02291/16 | 16 | 42 | ...129120 |



Lawn rake Rake for picking up particles of cut grass from the lawn. Insert socket, powder-coated, PU 5

| Number | Width (cm) | Tines | EAN 4007105 |
|-----------|------------|-------|-------------|
| 02290/60 | 60 | 32 | ...129014 |
| 02290/70 | 70 | 40 | ...129021 |
| 02290/100 | 100 | 56 | ...129038 |



Meadow rake Rake for picking up hay and cut grass on meadows. Insert socket, galvanised, PU 10

| Number | Width (cm) | Tines | EAN 4007105 |
|-----------|------------|-------|-------------|
| 02292/75 | 75 | 22 | ...129212 |
| 02292/100 | 100 | 28 | ...129229 |



Furrow maker (adjustable) Furrow maker with adjustable head angle for creating uniform seed planting furrows, variably adjustable distance between furrows. Galvanised steel, PU 5

| Number | Width (cm) | Furrow | Furrow length (cm) | EAN 4007105 |
|-----------|------------|--------|--------------------|-------------|
| 02238/75 | 75 | 6 | 12 | ...373806 |
| 02238/120 | 120 | 10 | 12 | ...373813 |



Aluminium rakes

Aluminium rake (adjustable) Aluminium rake with adjustable head angle for all fine and light smoothing or sowing work, rear edge usable for smoothing. Aluminium, galvanised insert socket, PU 5

| Number | Width (cm) | Tines | EAN 4007105 |
|----------|------------|-------|-------------|
| 02218/75 | 75 | 28 | ...001143 |



Aluminium rakes (adjustable) Aluminium rake with adjustable head angle for all smoothing or sowing work, rear edge usable for smoothing. Aluminium, galvanised insert socket, PU 1

| Number | Width (cm) | Tines | EAN 4007105 |
|-----------|------------|-------|-------------|
| 02218/100 | 100 | 36 | ...001129 |
| 02218/115 | 115 | 42 | ...001136 |



Light metal rake (adjustable) Light smoothing rake with adjustable head angle for all standard smoothing and garden work. Aluminium, galvanised insert socket, tines length 10 cm, PU 10

| Number | Width (cm) | Tines | EAN 4007105 |
|--------|------------|-------|-------------|
| 02297 | 62 | 16 | ...129700 |



Raking profile (adjustable) Raking profile with adjustable head angle for raking sandy and similar surfaces. Aluminium, galvanised insert socket, PU 5

| Number | Width (cm) | EAN 4007105 |
|----------|------------|-------------|
| 02220/75 | 75 | ...001204 |



Raking profile (adjustable) Raking profile with adjustable head angle and sturdy crossbars for raking sandy and similar surfaces. Aluminium, galvanised insert socket, PU 5

| Number | Width (cm) | EAN 4007105 |
|-----------|------------|-------------|
| 02220/100 | 100 | ...001181 |
| 02220/115 | 115 | ...001198 |



Wooden and plastic rakes, handles for rakes

Precision flattening rake Rake with adjustable head angle for high-precision flattening work, smoothing edge levels stones up to 1.5 cm (roll-out lawns). Wood, nylon tines, intervals of approx 1.5 cm, PU 10

| Number | Width (cm) | Tines | EAN 4007105 |
|------------|------------|-------------|-------------|
| 02214 | 67 | 28 | ...020144 |
| Spare part | Product | EAN 4007105 | |
| 02918 | 10 Tines | ...020182 | |



Lawn rake All-purpose wooden rake with adjustable head angle for decorative lawns, gentle aeration without harming roots. Wood, nylon tines, intervals of approx 1.5 cm, PU 10

| Number | Width (cm) | Tines | EAN 4007105 |
|------------|------------|-------------|-------------|
| 02216 | 67 | 28 | ...020168 |
| Spare part | Product | EAN 4007105 | |
| 02918 | 10 Tines | ...020182 | |



Flattening rake All-purpose wooden rake with adjustable head angle and smooth edge for all kinds of smoothing work. Wood, nylon tines, intervals of approx 2.5 cm, PU 10

| Number | Width (cm) | Tines | EAN 4007105 |
|------------|------------|-------------|-------------|
| 02217 | 67 | 20 | ...020175 |
| Spare part | Product | EAN 4007105 | |
| 02918 | 10 Tines | ...020182 | |



Wooden rake Rake with wooden tines for maintenance and gardening. Red beech, divided handle with clamp, PU 10

| Number | Width (cm) | Tines | EAN 4007105 |
|------------|------------|-------------|-------------|
| 02240 | 56 | 15 | ...004519 |
| Spare part | Product | EAN 4007105 | |
| 02934 | Handle | ...004526 | |
| 02935 | 10 Tines | ...004533 | |



Hay rake Light rake made from high-impact plastic for use with large quantities of hay and cut grass. Steel bow, plastic head, PU 5

| Number | Width (cm) | Tines | EAN 4007105 |
|--------|------------|-------|-------------|
| 02295 | 60 | 16 | ...129502 |



Tool handle Handle for rakes. Numerous versions, ø 28 mm, PU 10

| Number | Length (cm) | Material | Form | EAN 4007105 |
|-----------|-------------|-------------|----------|-------------|
| 02933 | 140 | Aspen | straight | ...005486 |
| 02900/140 | 140 | Ash | shaped | ...115482 |
| 02900/160 | 160 | Ash | shaped | ...115680 |
| 02900/180 | 180 | Ash | shaped | ...115641 |
| 02900/200 | 200 | Ash | shaped | ...115658 |
| 02910/150 | 150 | Fibre glass | straight | ...003734 |



Light hoes, scuffles and scrapers



FLORA's professional scuffles have a hardened blade which is screwed to the sturdy shaft. The blade can be removed and replaced.



The knife scuffle has a flexible spring steel blade, so it is very good for use on slightly uneven surfaces.



The kerb cleaner is a special device for communal cleaning. It helps to clean drains, so it prevents dangerous flooding.



Made in Germany



Sturdy shaft

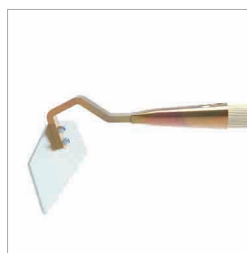
Screwed joint

Hardened, replaceable blade

Light hoes, scuffles and scrapers

Professional beet hoe For loosening cultivated plants. Galvanised, hardened, exchangeable blade, blade sharpened on one side, PU 10

| Number | Width (cm) | EAN 4007105 |
|----------|------------|-------------|
| 02120/10 | 10 | ...212006 |
| 02120/14 | 14 | ...212013 |
| 02120/16 | 16 | ...212020 |
| 02120/18 | 18 | ...212037 |
| 02120/20 | 20 | ...212044 |



Replacement blade for professional beet hoe Galvanised, hardened, blade sharpened on one side, PU 1

| Number | Width (cm) | EAN 4007105 |
|----------|------------|-------------|
| 02940/10 | 10 | ...294002 |
| 02940/14 | 14 | ...294019 |
| 02940/16 | 16 | ...294026 |
| 02940/18 | 18 | ...294033 |
| 02940/20 | 20 | ...294040 |

Professional lunated hoe For fine working in cultivated plants. Galvanised, hardened, exchangeable blade, blade sharpened on one side, PU 10

| Number | Width (cm) | EAN 4007105 |
|----------|------------|-------------|
| 02122/16 | 16 | ...212204 |
| 02122/18 | 18 | ...212211 |
| 02122/20 | 20 | ...212228 |



Replacement blade for Professional lunated hoe Galvanised, hardened, blade sharpened on one side, PU 1

| Number | Width (cm) | EAN 4007105 |
|----------|------------|-------------|
| 02941/16 | 16 | ...294101 |
| 02941/18 | 18 | ...294118 |
| 02941/20 | 20 | ...294125 |

Professional hoe Fine hoe for weeding , loosening and cleaning grouts. Galvanised, hardened blade, PU 10

| Number | Width (cm) | EAN 4007105 |
|----------|------------|----------------|
| 02124 | 6 | ...212402 |
| RP blade | Width (cm) | PU EAN 4007105 |
| 02942 | 6 | 1 ...294200 |



Professional hoe, Danish type For gentle loosening of soil and weed-pulling between plants. Galvanised, stainless steel exchangeable blade, PU 10

| Number | Width (cm) | EAN 4007105 |
|----------|------------|----------------|
| 02116/16 | 16 | ...331615 |
| 02116/19 | 19 | ...331622 |
| RP blade | Width (cm) | PU EAN 4007105 |
| 02916/16 | 16 | 1 ...029161 |
| 02916/19 | 19 | 1 ...029185 |



Draw hoe, Danish type Hoe for weeding and loosening. Galvanised, honed steel blade, PU 10

| Number | Width (cm) | EAN 4007105 |
|----------|------------|-------------|
| 02115/16 | 16 | ...131512 |



Light hoes, scuffles and scrapers

Bow-type hoe For gentle work between cultivated plants. Galvanised, honed steel blade, PU 10

| Number | Width (cm) | EAN 4007105 |
|----------|------------|-------------|
| 02113/16 | 16 | ...131321 |



Weed hoe, corn hoe, beet hoe For loosening hardened top layers of agricultural soil and for weeding. Powder-coated, riveted steel blade, PU 10

| Number | Width (cm) | EAN 4007105 |
|----------|------------|-------------|
| 02143/14 | 14 | ...134339 |
| 02143/16 | 16 | ...134346 |
| 02143/19 | 19 | ...134353 |



Professional rectangular hoe (hardened) For removing weeds and growth from flowerbeds and paths. Galvanised, hardened, exchangeable blade, blade sharpened on four sides, PU 10

| Number | Width (cm) | EAN 4007105 |
|----------|------------|----------------|
| 02320/15 | 15 | ...232004 |
| 02320/18 | 18 | ...232011 |
| RP blade | Width (cm) | PU EAN 4007105 |
| 02937/15 | 15 | 1 ...293708 |
| 02937/18 | 18 | 1 ...293715 |



Professional round hoe For removing weeds and growth from flowerbeds and paths. Galvanised, hardened, exchangeable blade, blade sharpened on four sides, PU 10

| Number | Width (cm) | EAN 4007105 |
|----------|------------|----------------|
| 02322/15 | 15 | ...232202 |
| 02322/18 | 18 | ...232219 |
| RP blade | Width (cm) | PU EAN 4007105 |
| 02938/15 | 15 | 1 ...293807 |
| 02938/18 | 18 | 1 ...293814 |



Professional rhomboid hoe (hardened) For removing weeds etc. from flowerbeds and paths. Galvanised, hardened, exchangeable blade, blade sharpened on four sides, PU 10

| Number | Width (cm) | EAN 4007105 |
|----------|------------|----------------|
| 02324/15 | 15 | ...232400 |
| 02324/18 | 18 | ...232417 |
| RP blade | Width (cm) | PU EAN 4007105 |
| 02939/15 | 15 | 1 ...293906 |
| 02939/18 | 18 | 1 ...293913 |



Scuffle hoe For removing weeds and growth from flowerbeds and paths. Galvanised, blade sharpened on four sides, PU 10

| Number | Width (cm) | EAN 4007105 |
|----------|------------|-------------|
| 02341/14 | 14 | ...134117 |
| 02341/16 | 16 | ...134124 |
| 02341/18 | 18 | ...134131 |



Light hoes, scuffles and scrapers

Blade shovel For thorough removal of dirt, moss and weeds on paths and paved surfaces. Galvanised, self-sharpening, exchangeable blade, PU 10

| Number | Width (cm) | Version | EAN 4007105 |
|-------------------|------------|--------------|-------------|
| 02342/1 | 20 | Single-sided | ...134209 |
| 02342/2 | 20 | Double-sided | ...134223 |
| Replacement blade | Width (cm) | PU | EAN 4007105 |
| 02912 | 20 | 1 | ...029123 |



Scraper, building site scraper For removal of dried-on dirt and mortar residue. Galvanised steel, replaceable blade, PU 10

| Number | Width (cm) | Socket (mm) | EAN 4007105 |
|-----------|------------|-------------|-------------|
| 02312/150 | 15 | 28 | ...004557 |
| 02312/200 | 20 | 28 | ...004564 |
| 02312/300 | 30 | 28 | ...004571 |
| 02311/150 | 15 | 30 | ...009002 |
| 02311/200 | 20 | 30 | ...009101 |
| 02311/300 | 30 | 30 | ...009200 |



Grout cleaner For cleaning crevices and joints. Galvanised, exchangeable blade, PU 10

| Number | EAN 4007105 |
|-------------------|----------------|
| 02310 | ...022179 |
| Replacement blade | PU EAN 4007105 |
| 02913 | 1 ...029130 |



Kerbstone cleaner Tried and tested tool for cleaning drains, gutters and kerbside crevices, crevice cleaner removes moss and weeds. Galvanised, replaceable blade, PU 10

| Number | EAN 4007105 |
|-----------------------|----------------|
| 02348 | ...134803 |
| Replacement blade set | PU EAN 4007105 |
| 02914 | 1 ...134810 |



Tool handle Handle for tools with socket. Numerous versions, ø 28 mm, PU 10

| Number | Length (cm) | Material | Form | EAN 4007105 |
|-----------|-------------|-------------|----------|-------------|
| 02933 | 140 | Aspen | straight | ...005486 |
| 02900/140 | 140 | Ash | shaped | ...115482 |
| 02900/160 | 160 | Ash | shaped | ...115680 |
| 02910/150 | 150 | Fibre glass | straight | ...003734 |



Heavy hoes



Flat hoe Heavy hoe with compact handle for clearing and cultivating heavy soil. Forged blade, PU 5

| Number | Meas. W x L (cm) | Weight (g) ¹ | Handle | EAN 4007105 |
|--------|---------------------|-------------------------|---------|-------------|
| 02100 | 10 x 20 | 1500 | without | ...132076 |
| 02101 | 10 x 20 | 1500 | Ash | ...132083 |



Field hoe Medium-weight hoe, optional with long handle. Forged blade, PU 5

| Number | Size | Meas.WxL(cm) | Weight (g) ¹ | Handle | EAN 4007105 |
|---------|------|--------------|-------------------------|---------|-------------|
| 02102/0 | 0 | 10 x 17 | 600 | without | ...132014 |
| 02103/0 | 0 | 10 x 17 | 600 | Ash | ...132021 |
| 02102/1 | 1 | 11 x 18 | 700 | without | ...132038 |
| 02103/1 | 1 | 11 x 18 | 700 | Ash | ...132045 |
| 02102/2 | 2 | 12 x 19 | 800 | without | ...132052 |
| 02103/2 | 2 | 12 x 19 | 800 | Ash | ...132069 |



Hoopoe hoe Turnable hoe, suitable for clearing, cultivating and planting. Forged, oval blade, optional with handle 105 cm, PU 1

| Number | Handle | EAN 4007105 |
|--------------------|---------|-------------|
| 02106 | without | ...132809 |
| 02107 | Ash | ...132908 |
| Replacement handle | | EAN 4007105 |
| 02903 | | ...005394 |



Pick axe For rough jobs on rocky and hard earth, optional with handle. Forged, PU 1

| Number | Weight (kg) ¹ | Handle | EAN 4007105 |
|------------|--------------------------|-------------|-------------|
| 02104/2500 | 2.5 | without | ...132403 |
| 02105/2500 | 2.5 | Ash | ...132502 |
| 02108/2500 | 2.5 | Fibre glass | ...021080 |
| 02104/3500 | 3.5 | without | ...132601 |
| 02105/3500 | 3.5 | Ash | ...132700 |
| 02108/3500 | 3.5 | Fibre glass | ...021097 |



Replacement handle for Pick axe Several material, PU 1

| Number | Length (cm) | Material | EAN 4007105 |
|--------|-------------|-------------|-------------|
| 02902 | 95 | Ash | ...005387 |
| 02910 | 92 | Fibre glass | ...029109 |

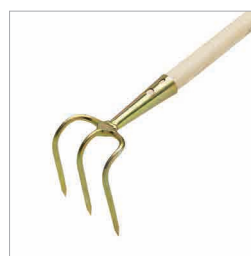
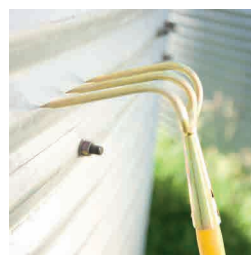
Key

¹ The weight stated for the heavy hoes is without a handle.

Cultivators

Cultivators Extremely sturdy tool for loosening soil and removing weeds, straight tines for working manure and fertilizers into the soil. Forged, welded-on socket, galvanised, PU 10

| Number | Tines | Width (cm) | Length (cm) | EAN 4007105 |
|---------|-------|------------|-------------|-------------|
| 02304/3 | 3 | 10 | 14 | ...180305 |
| 02304/4 | 4 | 13 | 12 | ...180404 |



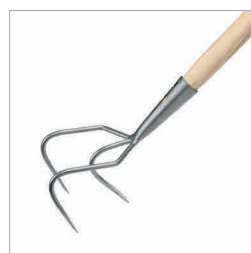
Grubber Small cultivator for loosening soil and removing weeds, for working in dense growth areas. Powder-coated, PU 10

| Number | Tines | Width (cm) | EAN 4007105 |
|--------|-------|------------|-------------|
| 02301 | 3 | 9 | ...174502 |



Cultivator Cultivator for uniform pulling work. Powder-coated, variable tines shape, PU 10

| Number | Tines | Tines form | Tines width (mm) | Working width (cm) | EAN 4007105 |
|---------|-------|------------|------------------|--------------------|-------------|
| 02303/3 | 3 | lance | 16 | 11 | ...176001 |
| 02302 | 3 | furrow | 35 | 17 | ...176308 |



Aerator Ideal for targeted loosening of soil in shrubbery and vegetables beds, for pulling on individual furrow lines. Powder-coated, PU 10

| Number | Tines | Tines form | Tines width (mm) | EAN 4007105 |
|--------|-------|------------|------------------|-------------|
| 02308 | 3 | furrow | 35 | ...174106 |



Weeding hoe Three tines to loosen the soil and for weeding, blade for cutting up soil and roots. Powder-coated, straight blade, three tines, PU 10

| Number | EAN 4007105 |
|--------|-------------|
| 02306 | ...152302 |



Tool handle Handle for tools with socket. Numerous versions, ø 28 mm, PU 10

| Number | Length (cm) | Material | Form | EAN 4007105 |
|-----------|-------------|-------------|----------|-------------|
| 02933 | 140 | Aspen | straight | ...005486 |
| 02900/140 | 140 | Ash | shaped | ...115482 |
| 02900/160 | 160 | Ash | shaped | ...115680 |
| 02910/150 | 150 | Fibre glass | straight | ...003734 |



Small tools



Plant trowel Robust, multi-purpose tool. Cut steel blade, swan's neck, beech handle, PU 10

| Number | Width (cm) | EAN 4007105 |
|---------|------------|-------------|
| 03005/5 | 5 | ...030051 |



Hand spade Robust, multi-purpose tool. Cut steel blade, swan's neck, beech handle, PU 10

| Number | Width (cm) | EAN 4007105 |
|---------|------------|-------------|
| 03005/7 | 7 | ...034226 |



Dibble For fast digging of planting holes for seedlings. Wooden handle, steel tip, PU 10

| Number | Handle | Length (cm) | EAN 4007105 |
|--------|--------|-------------|-------------|
| 03000 | Button | 28 | ...330007 |
| 03001 | Crook | 28 | ...330106 |



Asparagus knife Forged steel, partially ground, hardwood handle, PU 10

| Number | Length (cm) | Width (cm) | EAN 4007105 |
|--------|-------------|------------|-------------|
| 03012 | 44 | 2.5 | ...030129 |



Shoe scraper Tough design with shaped metal fittings and wide bridge for bricking or hammering in, powder-coated, black, PU 1

| Number | Width (cm) | EAN 4007105 |
|--------|------------|-------------|
| 06902 | 15 | ...003741 |



Small tools

Leaf rake Small tool for use in flowerbeds. Flat spring steel tines, powder-coated, PU 10

| Number | Width (cm) | Tines | EAN 4007105 |
|--------|------------|-------|-------------|
| 03020 | 16 | 7 | ...033205 |



Multi-purpose weeder Hand-held tool for weeding and cleaning joints. Powder-coated, PU 10

| Number | Length (cm) | EAN 4007105 |
|--------|-------------|-------------|
| 03021 | 23 | ...033212 |



Small double hoe Hoe for loosening soil and weeding. 3 tines, sharpened blade, powder-coated, PU 10

| Number | Width (cm) | Tines | EAN 4007105 |
|--------|------------|-------|-------------|
| 03022 | 7 | 3 | ...033229 |



Hand grubber Cultivator for loosening soil. Powder-coated, PU 10

| Number | Width (cm) | Tines | EAN 4007105 |
|--------|------------|-------|-------------|
| 03023 | 7 | 3 | ...033236 |



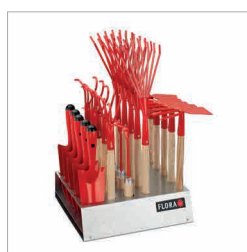
Flower trowel Sturdy, one-piece tool for working with plants. Steel handle, powder-coated, PU 10

| Number | Width (cm) | EAN 4007105 |
|--------|------------|-------------|
| 03024 | 8 | ...033243 |



Display stands small tools Attractive display stands for the sales counter. Galvanised steel, 5 x 5 small hand tools 03020, 03021, 03022, 03023, 03024, PU 1

| Number | EAN 4007105 |
|----------|-------------|
| 08325/15 | ...004762 |



LÖWE Shears



Original LÖWE shears have always stood for durability, sturdiness and a clear design. They offer practice-oriented details, maximum efficiency and exceptional toughness for everyday use. All the components of the shears are manufactured and assembled by specially trained experts in Germany.



Made in Germany



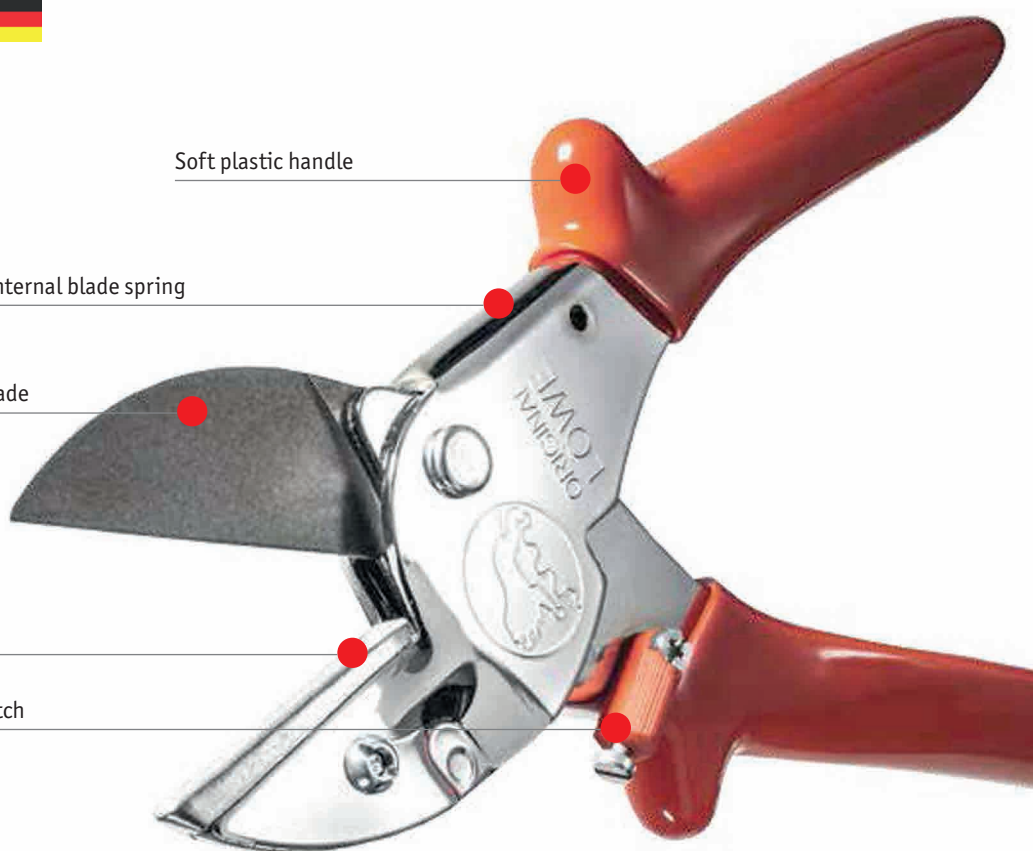
Soft plastic handle

Internal blade spring

Hard, tough, sharp blade

Soft anvil

Safety latch



LÖWE shears

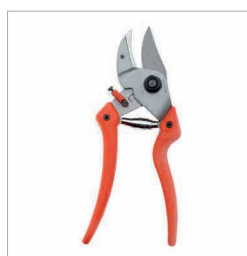
Anvil pruner with straight blade Well-trying anvil pruner for robust use in many different applications. PU 5

| Number | No. LÖWE | Capacity (mm) | Length (cm) | Weight (g) | EAN 4033119 |
|-----------|----------|---------------|-------------|------------|-------------|
| 03301/104 | 1.104 | 25 | 21 | 270 | ...000025 |
| 03305/107 | 5.107 | 16 | 17.5 | 190 | ...000650 |



Professional anvil pruner with curved blade Ergonomic pruner, short, curved blade prevents the material from slipping out, adjustable for different hand sizes. PU 5

| Number | No. LÖWE | Capacity (mm) | Length (cm) | Weight (g) | EAN 4033119 |
|-----------|----------|---------------|-------------|------------|-------------|
| 03307/107 | 7.107 | 22 | 20 | 235 | ...000810 |
| 03308/107 | 8.107 | 24 | 21 | 250 | ...000711 |



Professional Bypass pruner Lightweight bypass pruner for precise cutting results, strong fibre-glass reinforced handles help to minimize the cutting impact. PU 5

| Number | No. LÖWE | Capacity (mm) | Length (cm) | Weight (g) | EAN 4033119 |
|-----------|----------|---------------|-------------|------------|-------------|
| 03311/104 | 11.104 | 25 | 21 | 210 | ...000483 |
| 03312/104 | 12.104 | 20 | 19 | 180 | ...000476 |



Anvil pruner Compact anvil pruner in mid-range price segment for standard use. PU 5

| Number | No. LÖWE/ grind | Capacity (mm) | Length (cm) | Weight (g) | EAN 4033119 |
|-----------|--------------------|---------------|-------------|------------|-------------|
| 03314/104 | 14.104 (Bypass) | 22 | 19 | 180 | ...000865 |
| 03315/104 | 15.104 (Amboss) | 25 | 19 | 190 | ...000889 |



Bypass lopper Bypass lopper for pruning sensitive fresh and green wood. PU 1

| Number | No. LÖWE | Capacity (mm) | Length (cm) | Weight (g) | EAN 4033119 |
|-----------|----------|---------------|-------------|------------|-------------|
| 03331/050 | 31.050 | 30 | 50 | 670 | ...310506 |
| 03321/065 | 21.065 | 40 | 65 | 990 | ...210653 |



Anvil lopper Long high-performance lopper for cutting hard/dead wood. PU 1

| Number | No. LÖWE | Capacity (mm) | Length (cm) | Weight (g) | EAN 4033119 |
|-----------|----------|---------------|-------------|------------|-------------|
| 03322/080 | 22.080 | 45 | 80 | 1180 | ...220805 |



Lawn care



Lawn roller For smoothing lawns, playing fields or sports surfaces, fill with water or sand. Tubular frame, powder-coated, metal screw plug, PU 1

| Number | Meas. roller (cm) | Volume (l) | Weight (kg) | Handle height axle cen.(cm) | EAN 4007105 |
|----------|----------------------|------------|-------------|--------------------------------|-------------|
| 04858/60 | 50 x ø 40 | 60 | 17.0 | 104 | ...425802 |
| 04858/75 | 60 x ø 40 | 75 | 19.3 | 114 | ...001044 |



Light lawn roller Ideal for flattening smaller areas and compressing seeded areas. Steel tube frame, powder-coated, rubber plug, PU 1

| Number | Meas. roller (cm) | Volume (l) | Weight (kg) | Handle height axle cen.(cm) | EAN 4007105 |
|--------|----------------------|------------|-------------|--------------------------------|-------------|
| 04857 | 45 x ø 30 | 30 | 8.0 | 84 | ...425703 |



Turf edger For separating overhanging grass accumulations on grass edges. Forged, honed blade, steel tube, powder-coated, T-handle, PU 1

| Number | Width (cm) | EAN 4007105 |
|--------|------------|-------------|
| 04801 | 30 | ...003123 |



Spiked lawn roller For loosening smoothed areas during preparation for sowing seeds and for surface aeration of damp lawn surfaces. Tubular frame, powder-coated, PU 1

| Number | Roller | Meas. W x D x H (cm) | Handle height (cm) | Weight (kg) | EAN 4007105 |
|---------|--------|-------------------------|-----------------------|-------------|-------------|
| 04800/1 | 1 | 56 x 17 | 133 | 8.5 | ...001051 |
| 04800/2 | 2 | 56 x 44 | 137 | 17.5 | ...001068 |



Laying tools

Rammer For solidifying work, damper compensates for lateral impacts. Steel, rubber damper, straight handle, PU 1

| Number | Area W x D (cm) | Weight (kg) | Height (cm) | EAN 4007105 |
|----------|--------------------|-------------|-------------|-------------|
| 04626/12 | 18 x 12 | 6.1 | 115 | ...046267 |
| 04626/20 | 20 x 20 | 9.4 | 115 | ...046281 |

Rammer For solidifying work, damper compensates for lateral impacts. Steel, rubber damper, T-handle, PU 1

| Number | Area W x D (cm) | Weight (kg) | Height (cm) | EAN 4007105 |
|--------|--------------------|-------------|-------------|-------------|
| 04627 | 20 x 20 | 9.0 | 85 | ...172706 |

Lifting tongs For lifting kerbstones, natural rock, concrete elements, pipes, etc. Steel, exchangeable rubber grip surfaces, PU 1

| Number | Diameter range (cm) | Immersion depth (cm) | Max. permit- ted load (kg) | Weight (kg) | EAN 4007105 |
|--------|------------------------|-------------------------|-------------------------------|-------------|-------------|
| 04630 | 0 - 37 | 20 | 80 | 4.9 | ...267303 |

Soil drill Robust tool for drilling holes for posts etc. in earthy, clayey or sandy soil. Steel, powder-coated, large sturdy tip, PU 1

| Number | Diameter (mm) | Height (cm) | EAN 4007105 |
|-----------|------------------|-------------|-------------|
| 04731/70 | 70 | 105 | ...002591 |
| 04731/90 | 90 | 105 | ...002607 |
| 04731/150 | 150 | 105 | ...173307 |

Post hole digger Robust tool for drilling holes for poles and masts of different diameters. High-strength steel blades, ground, powder-coated, PU 1

| Number | Range (cm) | Height (cm) | EAN 4007105 |
|-----------|-------------|-------------|-------------|
| 04734/200 | ø 150 - 200 | 150 | ...173406 |
| 04734/260 | ø 190 - 260 | 225 | ...173505 |



IDEAL spades, shovels



IDEAL-Spade, gardening spade Classical, high-performance spade for heavy duty work. One piece, conically rolled, self-sharpening, hardened blade, double clamp socket, double-riveted step brackets, double curved ash T-handle, PU 1

| Number | Meas. blade L x W (mm) | Length handle (cm) | EAN 4005827 |
|--------|---------------------------|-----------------------|-------------|
| 02425 | 285 x 185 | 85 | ...100328 |



PIONIER-Spade, gardening spade Solid universal spade. Hardened blade, double clamp socket, riveted, step brackets, ash T-handle, PU 1

| Number | Meas. blade L x W (mm) | Length handle (cm) | EAN 4005827 |
|--------|---------------------------|-----------------------|-------------|
| 02426 | 280 x 190 | 85 | ...291248 |



IDEAL-Spade fork Lightweight, robust spade fork for digging and soil loosening. Forged, four lance tines, rail clamp, curved ash T-handle, PU 1

| Number | Meas. blade L x W (mm) | Length handle (cm) | EAN 4005827 |
|--------|---------------------------|-----------------------|-------------|
| 02430 | 250 x 170 | 85 | ...670609 |



FAVORIT-Light metal scoop, Hallenser shape High performance scoop with large capacity and flexible use. Aluminium, high shoulders, galvanised steel edge, steel riveted socket, long hole for handle attachment, PU 5

| Number | Size | Meas. W x D (mm) | EAN 4005827 |
|--------|------|---------------------|-------------|
| 02470 | 9 | 380 x 380 | ...060240 |



Shovels

American shovel Original shovel (Ames Union Tools) for using with plants and in soil. Carbon steel, 10-year warranty on the blade, tread shaped to the front, swan's neck, long handle guide, PU 6

| Number | Meas. blade L x W (mm) | Handle | Ames brand | Deployment | EAN 4007105 |
|--------|---------------------------|-------------|-----------------------|------------|-------------|
| 02400 | 270 x 210 | Ash | Union Tools | Standard | ...004915 |
| 02402 | 270 x 210 | Fibre glass | True Temper | Standard | ...004892 |
| 02411 | 270 x 210 | Ash | True Temper Kodiak | demanding | ...024111 |



Round point shovel Excavator-shovel made by True Temper for digging in tough soils. Carbon steel, large step shaped to the front, swan's neck, long handle guide, PU 6

| Number | Meas. blade L x W (mm) | Handle | Ames brand | Deployment | EAN 4007105 |
|--------|---------------------------|--------|-------------|------------|-------------|
| 02420 | 300 x 260 | Ash | True Temper | demanding | ...124200 |



Shovel American-type Universal shovel, 10-year warranty on the blade. Hardened blade, tread formed to the rear, long handle guide, ash shaft, PU 6

| Number | Meas. blade L x W (mm) | Handle | EAN 4007105 |
|--------|---------------------------|--------|-------------|
| 02414 | 300 x 220 | Ash | ...024142 |



Shovel American-type, serrated edge Universal shovel with serrated edge for easy penetration into rooty soil, 10-year warranty on the blade. Hardened blade, tread formed to the rear, long handle guide, ash shaft, PU 6

| Number | Meas. blade L x W (mm) | Handle | EAN 4007105 |
|--------|---------------------------|--------|-------------|
| 02415 | 300 x 220 | Ash | ...024159 |



Aluminium scoop (Hallenser shape) Multi-purpose scoop with galvanised edge for scooping snow, dirt and refuse. Aluminium, with shoulder, galvanised steel edge, riveted socket, long hole for handle attachment, PU 10

| Number | Size | Meas. W x D (mm) | EAN 4007105 | |
|---------------|------|---------------------|-------------|-------------|
| 02485/7 | 7 | 320 x 340 | ...024913 | |
| 02485/9 | 9 | 370 x 380 | ...006209 | |
| RP steel edge | Size | Equipment | PU | EAN 4007105 |
| 02917/9 | 9 | Rivets | 1 | ...029178 |



Shovel handle Suitable handles for scoops, bent, PU 10

| Number | Length (cm) | Scoops | Material | EAN 4007105 |
|-----------|-------------|----------|-------------|-------------|
| 02915/130 | 130 | Alu | Ash | ...008807 |
| 02908/135 | 135 | Alu | Fibre glass | ...001921 |
| 02908/150 | 150 | Alu | Fibre glass | ...001914 |
| 02906 | 120 | American | Ash | ...029062 |



Firewood handling



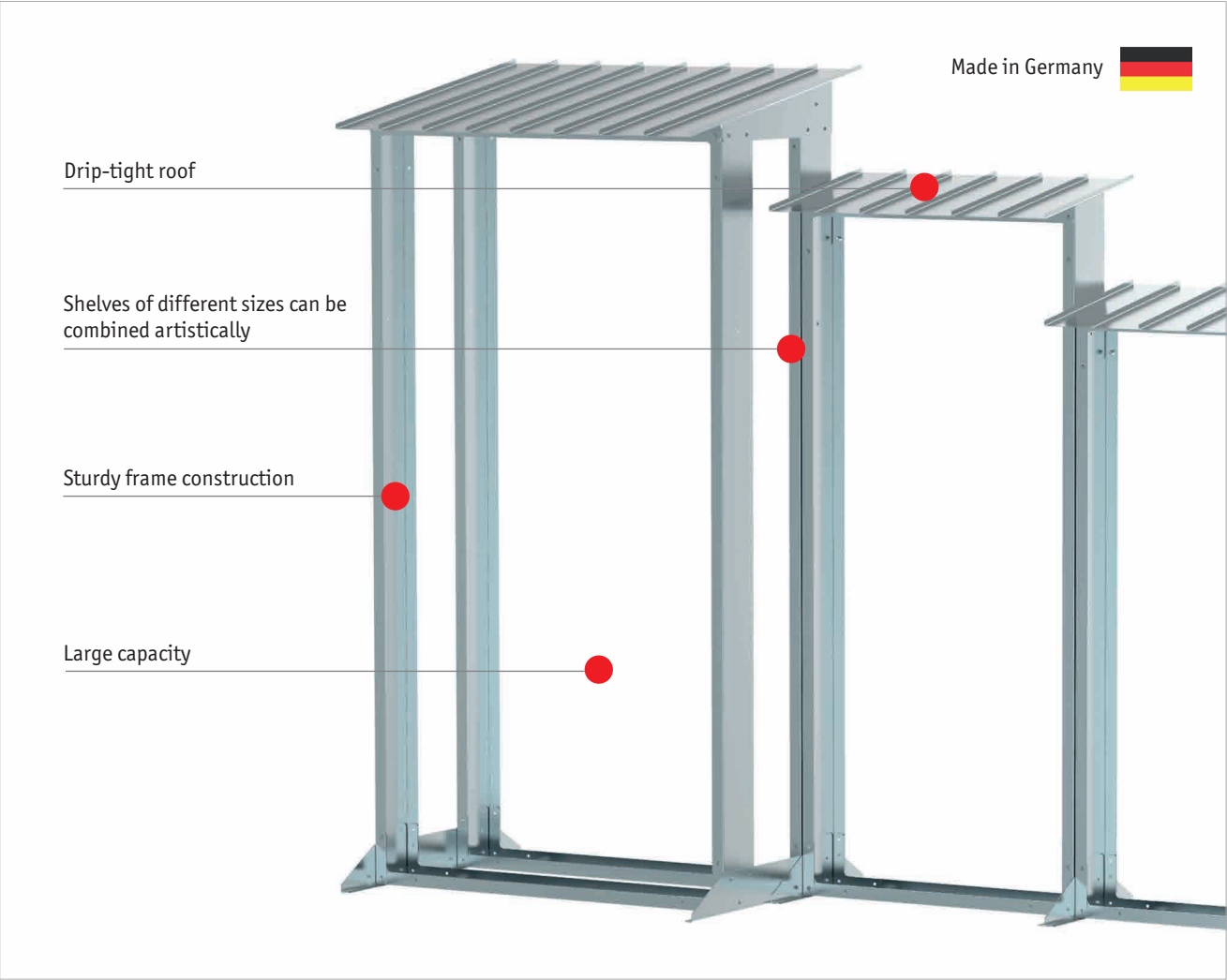
Study construction of firewood shelf and stacking aid with reinforcement brackets in the foot section.



Stacking aid and firewood shelf are flat-pack pieces which are easy to ship.



Four rollers on the firewood trolley for high manoeuvrability indoors.



Firewood handling

Firewood rack Rack in three sizes for outdoor storing of wood billets, with roof, for self-assembling, PU 1

| Number | Meas. W x D x H (cm) | Weight (kg) | Volume (m ³) | EAN 4007105 |
|--------------|-------------------------|-------------|--------------------------|-------------|
| 07519/100/02 | 100 x 44 x 145 | 12.9 | 0.45 | ...005509 |
| 07519/75/02 | 75 x 44 x 170 | 11.8 | 0.37 | ...005516 |



Firewood rack, double Rack in three sizes for outdoor storing of wood billets, with roof, for self-assembling, PU 1

| Number | Meas. W x D x H (cm) | Weight (kg) | Volume (m ³) | EAN 4007105 |
|--------------|-------------------------|-------------|--------------------------|-------------|
| 07520/100/02 | 100 x 80 x 200 | 27.3 | 1.2 | ...005523 |



Stacking aid Support for storing firewood in the garage or in the basement, for self-assembling, PU 1

| Number | Meas. W x D x H (cm) | Weight (kg) | Volume (m ³) | EAN 4007105 |
|--------------|-------------------------|-------------|--------------------------|-------------|
| 07521/120/02 | 120 x 44 x 120 | 7.1 | 0.45 | ...005530 |
| 07521/170/02 | 170 x 44 x 120 | 7.9 | 0.65 | ...005547 |



Sawbuck Sawbuck for private firewood handling, foldable, for self-assembling, PU 1

| Number | Meas. W x D x H (cm) | Weight (kg) | Volume (m ³) | EAN 4007105 |
|----------|-------------------------|-------------|--------------------------|-------------|
| 07522/02 | 84 x 68 x 87 | 8.5 | | ...005554 |



Firewood trolley Trolley to transport firewood and to store it in the living area, for self-assembling, PU 1

| Number | Meas. W x D x H (cm) | Weight (kg) | Volume (m ³) | EAN 4007105 |
|----------|-------------------------|-------------|--------------------------|-------------|
| 07523/17 | 46 x 37 x 105 | 13.7 | 0.13 | ...005561 |



Firewood carrier Carrier for transport and for storing firewood in the living area, for self-assembling, PU 1

| Number | Meas. W x D x H (cm) | Weight (kg) | Volume (m ³) | EAN 4007105 |
|----------|-------------------------|-------------|--------------------------|-------------|
| 07524/17 | 36 x 69 x 27 | 3.2 | 0.06 | ...005578 |



Snow shovels



Poly snow shovel Light plastic snow shovel with galvanised steel edge for pushing and shovelling medium accumulations of snow. Blade polypropylene, wooden handle D-grip, PU 10

| Number | Meas. W x D (mm) | EAN 4007105 |
|--------|---------------------|-------------|
| 02468 | 500 x 355 | ...004687 |



Snow shovel aluminium Light snow shovel with galvanised steel edge for shovelling medium quantities of snow. Aluminium, steel socket, without handle, PU 10

| Standardly seed soaked without harvest/PO 10 | | | | |
|--|---------------------|------------------|-------------|-------------|
| Number | Meas. W x D (mm) | | EAN 4007105 | |
| 02462 | 500 x 340 | | ...003901 | |
| Handle, wood | Length (cm) | Strength (mm) | PU | EAN 4007105 |
| 02904 | 130 | ø 30 | 10 | ...008500 |



Aluminium snow shovel Sturdy snow shovel with aluminium edge for pushing and shovelling medium quantities of snow. Aluminium, for shovel handle ø 41 mm, without handle, PU 10

| Number | Meas. W x D (mm) | EAN 4007105 |
|--------|---------------------|-------------|
| 02465 | 520 x 390 | ...003925 |



Aluminium scoop (Hallenser shape) Multi-purpose scoop with galvanised edge for scooping snow, dirt and refuse. Aluminium, with shoulder, galvanised steel edge, riveted socket, long hole for handle attachment, PU 10

| * Additionally, with shoulder, galvanised steel edge, riveted socket, long note for handle attachment; PU 16 | | | | |
|--|------|---------------------|-------------|-------------|
| Number | Size | Meas. W x D (mm) | EAN 4007105 | |
| 02485/9 | 9 | 370 x 380 | ...006209 | |
| Replacement steel edge | Size | Equipment | PU | EAN 4007105 |
| 02917/9 | 9 | Rivets | 1 | ...029178 |



Straight snow shovel Sturdy, flat snow shovel for use on dense compacted snow. Galvanised, without handle, PU 10

| Number | Meas. B x T (mm) | EAN 4007105 | | |
|--------------|---------------------|------------------|----|-------------|
| 02455/40 | 400 x 140 | ...001501 | | |
| 02455/50 | 500 x 180 | ...001709 | | |
| Handle, wood | Length (cm) | Strength (mm) | PU | EAN 4007105 |
| 02904 | 130 | ø 30 | 10 | ...008500 |



Ice scraper Robust tool for loosening ice and compacted dirt. Powder-coated, for handle ø 28 mm, without handle, PU 5

| Tool handle: Robust tool for loosening ice and compacted and frozen soils; for handle 2-25 mm; without handle/10-5 | | | | |
|--|-------------|-------------|-------------|-------------|
| Number | Width (mm) | Weight (g) | EAN 4007105 | |
| 02456 | 150 | 680 | ...009507 | |
| Tool handle | Length (cm) | Material | Form | EAN 4007105 |
| 02900/140 | 140 | Ash | shaped | ...115482 |
| 02900/160 | 160 | Ash | shaped | ...115680 |
| 02910/150 | 150 | Fibre glass | straight | ...003734 |



Snow shovels

Shovel handles Suitable for shovels. Angled, PU 10

| Number | Length (cm) | Material | EAN 4007105 |
|-----------|-------------|-------------|-------------|
| 02915/130 | 130 | Ash | ...008807 |
| 02908/135 | 135 | Fibre glass | ...001921 |



Display stands Stable and attractive display stands with 10 snow shovels, including handles, not assembled. Galvanised steel display, PU 1

| Number | Equipment | EAN 4007105 |
|----------|-----------|-------------|
| 08325/07 | 02468 | ...005943 |



Display stands Stable and attractive display stands with 10 snow shovels, including handles, not assembled. Galvanised steel display, PU 1

| Number | Equipment | Handle | EAN 4007105 |
|----------|-----------|--------|-------------|
| 08325/08 | 02462 | 02904 | ...005950 |



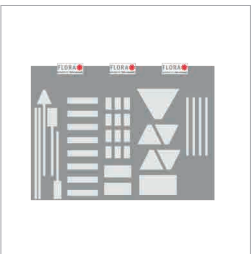
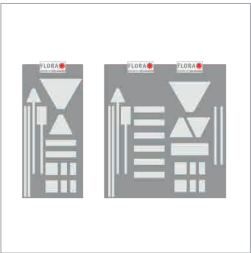
Display stands Stable and attractive display stands with 10 snow shovels, including handles, not assembled. Galvanised steel display, PU 1

| Number | Equipment | Handle | EAN 4007105 |
|----------|-----------|-----------|-------------|
| 08325/09 | 02465 | 02915/130 | ...005967 |

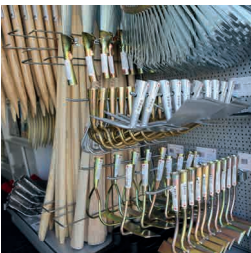
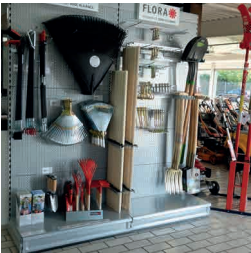


Retail support

Sales support for
retailers



Attractive showrooms and good advice from our retailers – these are the basis for creating a successful bond between the trade and the end customers. We support our resellers with modern sales concepts, including sales walls and product-specific displays. We offer a range of standard modules, taking into account individual requirements and requests, or product choices which are dependent on regional differences.



Displaystands for special product groups

Retail support

Trade fairs



FLORA exhibits at regional and international trade fairs in Germany and abroad. FLORA's aglessly modern trade fair presentations lead our visitors into the users' world, where their attention can be drawn to both new products and tried-and-tested solutions. The conversations and discussions which take place at the trade fairs represent the basis for good relationships and the source for innovations.



Terms and conditions of sale
dated May 1st 2018



All sales by FLORA Wilh. Förster GmbH & Co. KG are on the basis of our terms and conditions dated October 1st 2007 which can be forwarded to you upon request.

*** Prices:** Valid from May 1st 2018 to September 30th 2019 plus VAT (currently 19% in Germany). Retail prices (RRP*) correspond to the recommended price for end-users plus their local rate of VAT. No VAT will be charged if you provide us with details of your VAT registration number.

Minimum order value: 100 EUR excluding VAT. For orders under 100 EUR a handling charge of 15 EUR excluding VAT will be added.

Purchasing units (PU): Please keep to the number of purchasing units for orders under 100 EUR excluding VAT. If orders exceed the minimum order value, you do not need to take the purchasing units (PU) into consideration.

Delivery: Ex works Halver, freight costs upon request.

Scope of delivery: Wooden handles and accessories used with trolleys are not included in deliveries unless otherwise stated in the catalogue. Please see the description in the catalogue or ask us for more details.

Return: Goods which do not meet with a customer's approval or were incorrectly ordered must be returned at the customer's expense. A processing fee of 20% of the order value will be charged.

No liability for the contents of this document will be accepted. We reserve the right to modify design details, colours and surface treatments. All purchases are subject to our terms and conditions of trade. FLORA is a registered trademark of FLORA Wilh. Förster GmbH & Co. KG. All content in our catalogues (text, pictures, graphics) is protected by copyright law and must not be reproduced (in part or in total), distributed, transmitted, displayed, published or broadcast without FLORA's written consent.



FLORA Wilh. Förster
GmbH & Co. KG

Schmidtsiepen 3
58553 Halver
Germany

Tel +49 (0)2353 9117-0
Fax +49 (0)2353 9117-17
Email info@flora.biz
Internet www.flora.biz

FLORA 

